

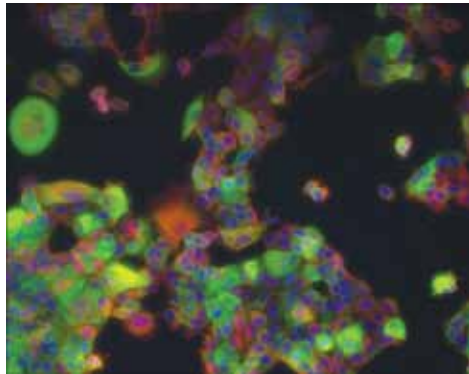
# Cancer Research

## New Reagents for Cancer Research

癌の原因と治療法を解明することは、現代医学に残された困難な挑戦です。癌の基本的な生物学を理解するうえで著しい進歩はありましたが、まだまだ十分ではありません。癌には、原因、基礎病理、臨床症状、治療への

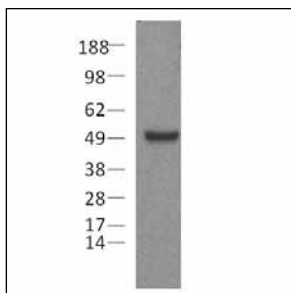
応答に関して非常に様々な特性があります。eBioscienceでは癌研究をサポートする幅広い有用な試薬を販売しています。

### Multi-Color Immunocytochemistry



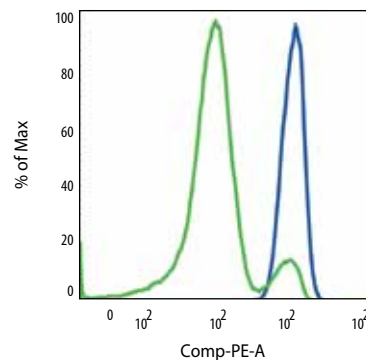
Alexa Fluor® 488標識 抗Pan Cytokeratin (cat. no. 53-9003; 緑), ビオチン標識抗 $\alpha$  Tubulin (cat. no. 13-4502)で染色後、Streptavidin eFluor® 605NC (cat. no. 93-2317; 赤)および10 nM Nuclear RED (DRAQ5™) nuclear stain (cat. no. 65-0880; 青)で染色したMCF-7細胞の免疫細胞染色、20倍。

### Human Pax5



還元状態で調整したDaudi細胞溶解液をSDS-PAGEで分離し、2  $\mu$ g/mlの抗マウス/ヒトPax5 (cat. no. 14-9918)でイムノプロットしました。バンドはHRP標識抗ラットIgGで視覚化しました。

### Mouse Pax5



PE-Cy7標識抗マウスCD23 (cat. no. 25-0232)およびFITC標識抗マウスCD21/35 (cat. no. 11-0211)でC57Bl/6マウスの脾細胞表面を染色後、Foxp3 Staining Buffer Set (cat. no. 00-5523)および0.125  $\mu$ gのPE標識抗マウス/ヒトPax5で細胞内染色しました。ヒストグラムは辺縁帯細胞(CD21high, CD23-) (青)またはT1細胞(CD21-, CD23-) (緑)の表面染色に基づき示しました。

2010 | April

### FEATURING

#### FLOWCYTOMIX™ MULTIPLEX ANALYTE DETECTION KITS

- sCD44var (v6) NEW
- sE-Selectin NEW
- sP-Selectin NEW
- RANTES NEW
- TGF- $\beta$ 1 NEW

#### INSTANT ELISA® KITS

- sCD44var (v5) NEW
- sCD44std NEW
- sCD44var (v6) NEW
- sHER-2 NEW
- TGF- $\beta$ 1 NEW
- Osteoprotegerin NEW

#### ANTIBODIES

- $\beta$ -catenin (h, m) NEW
- Cytokeratin (h, m) NEW
- E-cadherin (h, m)
- N-cadherin (h)
- Delta-like 1 (m) NEW
- EpCAM (h, m)
- Jagged-1 (m)
- Jagged-2 (m)
- Notch-1 (h, m)
- Notch-3 (m)
- Notch-4 (m)
- Pax5 (h, m) NEW

h=human, m=mouse

## Cancer Research Markers

Mouse Antibodies	Clone	Cat. No.	Applications	Purified	Functional Grade™ Purified	Biotin	Functional Grade™ Biotin	eFluor® 450	eFluor® 605NC	eFluor® 650NC	Fluor	Alexa Fluor® 488	PE	PE-Cy5	PE-Cy7	PerCP-Cy5.5	PerCP-eFluor® 710	APC	Alexa Fluor® 647	Alexa Fluor® 700	APC-eFluor® 780	
B7-H1	MIH5	5982	FC, FA, IHC	•	•	•							•									
β-catenin	15B8	2567	ICFC, WB, IP	•																•		
Cytokeratin-acidic	AE1	9001	WB, IHC	•																		
Cytokeratin-basic	AE3	9000	IHC, WB	•																		
Cytokeratin-pan	AE1/AE3	9003	IHC	•																		
Delta-like 1 (DLL-1)	HMD1-5	5767	FC, IHC, FA	•	•							•	•									
EpCAM	G8.8	5791	FC, IHC, IP	•		•							•		•			•				
E-Cadherin	DECMA-1	3249	FC, FA, WB, IHC, IP, ELISA	•		•											•		•			
Jagged-2	HMJ2-1	3392	FC			•																
Notch-1	mN1A	5785	ICFC, WB, IHC	•										•								
Notch-3	HMN3-133	5763	FC											•								
Notch-4	HMN4-14	5764	FC											•								
Nur77	12.14	5964	ICFC, WB	•									•									
Pax5	1H9	9918	ICFC, IHC, IP, WB	•									•									
SLP-76	MS76	7761	ICFC, WB	•							•											
SSEA-1	eBioMC-480	8813	FC, IHC, IP	•		•			•			•	•							•		
SSEA-3	eBioMC-631	8833	FC, IHC	•		•		•				•	•									
ZAP-70	1E7.2	6695	ICFC, WB, IP	•		•							•			•						
<b>Human Antibodies</b>	<b>Clone</b>	<b>Cat. No.</b>	<b>Applications</b>																			
ABCG2/Bcrp1	5D3	8888	FC	•	•	•							•									
B7-H1	MIH1	5983	FC, FA, IHC	•	•	•							•			•			•			
BAMBI	4E8	5826	FC	•		•							•									
Bcl-2	BI-2/100	1028	WB	•																		
E-Cadherin	DECMA-1	3249	FC, FA, WB, IHC, IP, ELISA	•		•												•		•		
N-Cadherin	8C11	3259	FC, WB, IHC, IP	•		•							•						•			
β-catenin	15B8	2567	ICFC, WB, IP	•																•		
Cytokeratin-acidic	AE1	9001	WB, IHC	•																		
Cytokeratin-basic	AE3	9000	IHC, IHC, WB	•																		
Cytokeratin-pan	AE1/AE3	9003	IHC	•																		
CD171	5G3	1719	FC, IHC, IP, WB	•									•									
EpCAM	1B7	9326	FC, IHC, IP, WB	•		•							•				•		•			
Ki-67	20Raj1	5699	IHC	•																		
MDR1	UIC2	2439	FC, FA		•								•									
Pax5	1H9	9918	ICFC, IHC, IP, WB	•									•									
RASSF1A	eB114-10H1	6888	WB, IP	•																		
SLP-76	HS76	7769	ICFC, WB	•						•												
SSEA-1	eBioMC-480	8813	FC, IHC, IP	•		•			•			•	•							•		
SSEA-3	eBioMC-631	8833	FC, IHC	•		•		•				•	•									
SSEA-4	eBioMC-813-70	8843	FC, IHC	•		•						•	•									
TARP	clone TP1	8868	WB, IHC	•																		
TCL1	eBio1-21	6699	ICFC, WB, IHC	•									•						•	•		
TRA-1-60	TRA-1-60	8863	FC, IHC, IP, WB	•		•							•									
ZAP-70	1E7.2	6695	ICFC, WB, IP	•		•							•			•						

**APPLICATION KEY:** FC=FlowCytometry; ICFC=IntracellularStaining/FlowCytometry; IHC=Immunohistochemistry; IHC/F=IHC (Frozen); IHC/P=IHC (Paraffin); IHC/PF=IHC (Paraffin&Frozen); BA=Bioassay; FA=FunctionalActivity; ELISA (c) = ELISA capture; ELISA (d) = ELISA detection; ELISPOT (c) = ELISPOT capture; ELISPOT (d) = ELISPOT detection; WB = Western Blot; IP = Immunoprecipitation; NU = Neutralizing

FlowCytomix™ Multiple Analyte Detection Kits for Human Proteins			
Product	Cat. No.	Description	
sCD44var (v6)	BMS80210FF	Simplex Kit	
sE-Selectin	BMS8205FF	Simplex Kit	
sP-Selectin	BMS8219/2FF	Simplex Kit	
TGF-β1	BMS8249FF	Simplex Kit	
Instant ELISA® Kits for Human Proteins			
Product	Cat. No.	Description	
sCD44std	BMS209INST	Instant ELISA® Kit	
sCD44var (v5)	BMS220INST	Instant ELISA® Kit	
sCD44var (v6)	BMS210INST	Instant ELISA® Kit	
sHER-2	BMS207INST	Instant ELISA® Kit	

Apoptosis Detection Kits for Human and Mouse		
Product	Cat. No.	Applications
Annexin V-eFluor® 450 Apoptosis Detection Kit	8006	FC
Annexin V-APC Apoptosis Detection Kit	8007	FC
Annexin V-FITC Apoptosis Detection Kit	8005	FC
Apo-BrdU Apoptosis Detection Kit	6671	FC
Apo-Direct Apoptosis Detection Kit	6611	FC
<b>APPLICATION KEY:</b> FC = Flow Cytometry		

All designated trademarks used are the property of their respective owners.

TOLL FREE 888.999.1371 | TEL 858.642.2058 | FAX 858.642.2046 | [contact@eBioscience.com](mailto:contact@eBioscience.com) | [www.eBioscience.com](http://www.eBioscience.com)

Q110020 Cancer\_3\_10