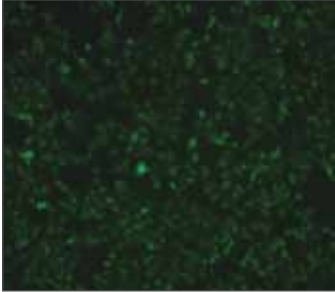


# Stem Cell Markers

New Tools for Stem Cell Research

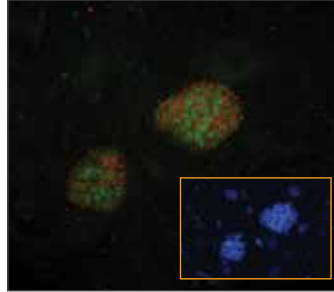
## Human Nestin



ヒト幹細胞(NSC line I6 1B)培養時に10ng/mlのヒトLIFを使用しました。5代継代後の細胞を5 μg/mlの Alexa Fluor® 488標識抗ヒトNestin(cat. no. 53-9843)を用い免疫組織染色で特異性を確認しました。約100%の細胞がNestin陽性でした。

\* Image provided courtesy of Xianmin Zeng, Buck Institute in San Francisco, CA

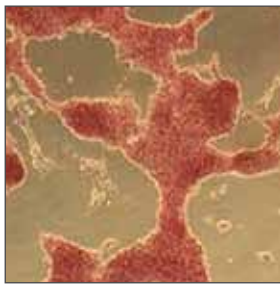
## Oct 3/4



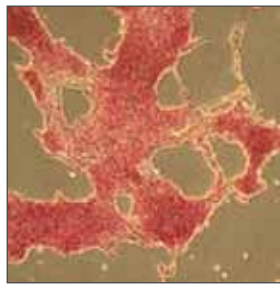
マウスES細胞を抗マウス/ヒトOct 3/4 (Cat. No. 14-5841)(green)、抗マウス/ヒト SSEA-1 (Cat. No. 14-8813)(red)、DAPI (inset)で染色しました。

\* Images provided courtesy of Sean Morrison, University of Michigan.

## Recombinant Mouse LIF



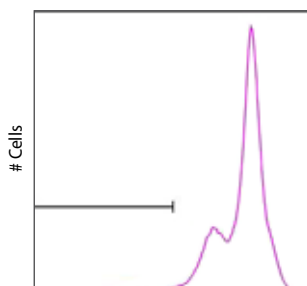
eBioscience®



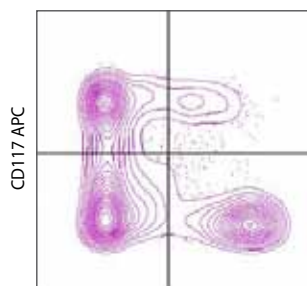
Competitor M

ESC (アルカリホスファターゼアッセイで多機能性を確認) 細胞培養でのeBioscience マウスLIF (左; cat. no. 34-8521、5 ng/ml) と競合品M (右; 5 mg/ml)を比較しました。

## Mouse Hematopoietic Lineage Flow Cocktail



Lineage Cocktail eFluor® 450



Sca-1 PE

C57Bl/6マウスの骨髄細胞をマウスHematopoietic Lineage Flow Cocktail、APC標識抗マウスCD117 (cat. no. 17-1171)およびPE標識抗マウスSca-1 (cat. no. 12-5981)で染色しました。リンパ球ゲート内の生細胞を解析に使用しました。右のプロットは左のヒストグラムで示されるリネージ陰性のゲート内の細胞を表示しています。

2010 | April

## FEATURING

### ANTIBODIES

- CD34 (h, m) **NEW**
- CD150 (m) **NEW**
- Delta-Like 1 (m) **NEW**
- Eomes (h, m) **NEW**
- Hematopoietic Lineage Flow Cocktail (h, m) **NEW**
- Jagged-1 (m) **NEW**
- Jagged-2 (m) **NEW**
- Nanog (h, m)
- Nestin (h, m) **NEW**
- Notch-3 (m) **NEW**
- Notch-4 (m) **NEW**
- Oct-3/4 (h, m)
- SSEA-1, -3, -4 (h, m)
- Tra-1-60, -81 (h)

### RECOMBINANT PROTEINS

- BMP2 (h) **NEW**
- PDGF-AA (h) **NEW**
- PDGF-BB (h) **NEW**
- IGF-1 (m) **NEW**
- IGF-2 (h) **NEW**
- FGF-basic (h, m) **NEW**
- LIF (m) **NEW**

### SUPPORT PRODUCTS

- Accumax™ Cell Aggregate Dissociation Medium
- Accutase™ Enzyme Cell Detachment Medium

*h=human, m=mouse*

## Stem Cell Markers

Human Stem Cell Markers				
Specificity	Clone	Applications	Cat. No.	Formats
CD34	4H11	FC, WB	0349	Purified, PE, APC, Alexa Fluor® 647, FITC, PE-Cy7, PerCP-eFluor® 710
CD38	HB7	FC	0388	PE, PerCP-eFluor® 710, eFluor® 650NC
CD90	eBio5E10	FC, WB, IHC/F, IP	0909	Purified, Biotin, FITC, PE, PE-Cy5, APC, PerCP-Cy5.5
CD117/c-Kit	YB5.B8	FC, IHC/F, IP	1179	Purified, Biotin, PE, APC, Pacific Blue®
CD123	6H6	FC, IHC/F, IHC/P	1239	Purified, Biotin, FITC, PE, PE-Cy7, APC, PerCP-Cy5.5, eFluor® 450, eFluor® 605NC
CD133	EMK08	FC, WB	1339	PE, Purified, APC
CD144 (VE-Cadherin)	16B1	FC, WB, IHC/P	1449	Purified, Biotin, PE, Alexa Fluor® 488, APC, Alexa Fluor® 700
CD324 (E-Cadherin)	DECMA-1	ELISA, FA, FC, IHC, IP, WB	3249	Purified, Biotin, Alexa Fluor® 647, PerCP-eFluor® 710
CD338/ABCG2	5D3	FC	8888	Purified, FG Purified, Biotin, PE
Eomes	21Mags8	ICFC, WB	4876	PE, Purified, Alexa Fluor® 647
Integrin β7	FIB504	FA, FC	5867	Purified, Biotin, FITC, PE, eFluor® 650NC
Myogenin	F5D	FC, WB	5643	Purified, Alexa Fluor® 488
Nestin	10C2	IHC/P, IH/F, WB	9843	Purified, Alexa Fluor® 488
Notch-1	mN1A	ICFC, IHC, WB	5785	Purified, Biotin, PE
Oct3/4	EM92	ICFC, WB, IHC	5841	Purified, PE, Alexa Fluor® 488, Alexa Fluor® 647
SSEA-1	eBioMC-480	FC, IHC, IP	8813	Purified, Biotin, PE, Alexa Fluor® 488, eFluor® 650NC, Alexa Fluor® 647
SSEA-3	eBioMC-631	FC, IHC	8833	Purified, Biotin, PE, Alexa Fluor® 488, eFluor® 605NC
SSEA-4	eBioMC-813-70	FC, IHC	8843	Purified, Biotin, PE, Alexa Fluor® 488
Tra-1-60 (podocalyxin)	Tra-1-60	FC, WB, IHC, IP	8863	Purified, Biotin, PE
Tra-1-81 (podocalyxin)	Tra-1-81	FC, WB, IHC	8883	Purified, Biotin, PE

Mouse Stem Cell Markers				
Specificity	Clone	Applications	Cat. No.	Formats
CD34	RAM34	FC, IHC/F, IHC/P	0341	Purified, FG Purified, Biotin, FITC, PE, Alexa Fluor® 647, Alexa Fluor® 700, Pacific Blue®
CD48	HM48-1	FC, FA, IP, WB	0481	Purified, FG Purified, Biotin, FITC, PE, APC
CD117/c-Kit	ACK2	FC, IHC/F, IP, WB	1172	Purified, FG Purified, PE, PE-Cy5, PE-Cy7, APC, APC-Alexa Fluor® 750, Alexa Fluor® 700
CD133 (Prominin-1)	13A4	FC, IHC, IP, WB	1331	Purified, FG Purified, Biotin, FITC, PE, APC, FG Biotin, Alexa Fluor® 488
CD144 (VE-Cadherin)	BV13	FC, FA, WB, IHC/F, IP	1441	Purified, FG Purified, Alexa Fluor® 488, Alexa Fluor® 647
CD150	mSHAD150	FC	1502	PE
CD309/Fik1	Avas12a1	FC, IHC, WB	5821	Purified, Biotin, PE, APC, Alexa Fluor® 700, Pacific Blue®
CD324 (E-Cadherin)	DECMA-1	ELISA, FA, FC, IHC, IP, WB	3249	Purified, Biotin, Alexa Fluor® 647, PerCP-eFluor® 710
Delta-Like 1	HMD1-5	FC, FA, IHC	5767	Alexa Fluor® 488
Eomes	21Mags8	ICFC, WB	4876	PE, Purified, Alexa Fluor® 647
Myogenin	F5D	FC, WB	5643	Purified, Alexa Fluor® 488
Nanog	eBioMLC-51	ICFC, WB	5761	Purified, Alexa Fluor® 488, Alexa Fluor® 647
Nestin	Rat-401 (4D4)	IHC, WB	5843	Purified
Notch-1	mN1A	ICFC, IHC, WB	5785	Purified, Biotin, PE
Notch-3	HMN3-133	FC	5763	PE
Notch-4	HMN4-14	FC	5764	PE
Oct-3/4	EM92	ICFC, WB, IHC	5841	Purified, PE, Alexa Fluor® 488, Alexa Fluor® 647
Sca-1 (Ly6A/E)	D7	FC, IP, WB	5981	Purified, FG Purified, Biotin, FITC, PE, PE-Cy5, APC, PE-Cy7, PE-Cy5.5, PerCP-Cy5.5, Alexa Fluor® 700, eFluor® 605NC
SSEA-1	eBioMC-480	FC, IHC, IP	8813	Purified, Biotin, PE, Alexa Fluor® 488, eFluor® 650NC, Alexa Fluor® 647
SSEA-3	eBioMC-631	FC, IHC	8833	Purified, Biotin, PE, Alexa Fluor® 488, eFluor® 605NC

**APPLICATIONKEY:**FC=FlowCytometry;ICFC=IntracellularStaining/FlowCytometry;IHC=Immunohistochemistry;IHC/F=IHC(Frozen);IHC/P=IHC(Paraffin);IHC/PF=IHC(Paraffin&Frozen);BA=Bioassay;FA=FunctionalActivity; ELISA (c) = ELISA capture; ELISA (d) = ELISA detection; ELISPOT (c) = ELISPOT capture; ELISPOT (d) = ELISPOT detection; WB = Western Blot; IP = Immunoprecipitation; NU = Neutralizing

Recombinant Proteins		
Products	Cat. No.	Formats
Human FGF-acidic	8987	Purified
Human FGF-basic 147	8986	Purified
Human BMP-2	8507	Purified
Mouse LIF	8521	Purified and Carrier-Free
Human Stem Cell Factor (SCF)	8349	Purified and Carrier-Free
Mouse Stem Cell Factor (SCF)	8341	Purified and Carrier-Free

Support Products		
Product	Cat. No.	
Accumax Cell Dissociation Medium	4666	
Accutase Enzyme Cell Detachment Medium	4555	

All designated trademarks used are the property of their respective owners.

TOLL FREE 888.999.1371 | TEL 858.642.2058 | FAX 858.642.2046 | [contact@eBioscience.com](mailto:contact@eBioscience.com) | [www.eBioscience.com](http://www.eBioscience.com)

Q110020 Stem\_Cell\_3\_10